



# INSTRUCTION BULLETIN

No. 9018922  
Machine: M17/T17  
Published: 01-2021  
Rev. 00

**NOTE: DO NOT DISCARD the Parts List from the Instruction Bulletin. Place the Parts List in the appropriate place in the machine manual for future reference. Retaining the Parts List will make it easier to reorder individual parts and will save the cost of ordering an entire kit.**

*NOTE: Numbers in parenthesis ( ) are reference numbers for parts listed in Bill of Materials.*

Installation instructions for **kit number 9018842**

Kit installation must be performed by TennantTrue<sup>®</sup> service or an authorized service provider.

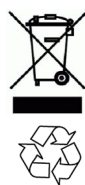
## SYNOPSIS:

This kit contains the parts needed to replace the pressure washer wand assembly on M17 sweeper scrubbers and T17 scrubbers.

Please follow step-by-step instructions.

## SPECIAL TOOLS / CONSIDERATIONS: NONE

(Estimated time to complete: 30 minutes)



### PROTECT THE ENVIRONMENT

Please dispose of packaging materials, used machine components such as batteries and fluids in an environmentally safe way according to local waste disposal regulations.

Always remember to recycle.

## PREPARATION:

**FOR SAFETY: Before leaving or servicing machine, stop on level surface, turn off machine, and remove key.**

1. Disconnect the pressure washer wand assembly from the pressure washer hose. Discard the pressure washer wand assembly.

## INSTALLATION:

1. Apply Teflon<sup>™</sup> pipe sealant onto all threaded surfaces of the wand (2) and the brass straight fitting (3). (Fig. 1)
2. Assemble the pressure washer wand assembly. (Fig. 1)

3. Connect the pressure washer wand assembly to the pressure washer hose.

4. Turn on the machine and activate the pressure washer system. Observe the pressure washer wand assembly connections and the wand connection to the pressure washer hose for leaks. Repair leaks. Point the pressure washer wand in a safe direction and squeeze the trigger to ensure the pressure washer wand assembly is functional.

5. Turn off the pressure washer system and machine. Point the pressure washer wand in a safe direction and squeeze the trigger to release pressure from the system.

*NOTE: To ensure a tight fit for all pressure washer wand assembly threaded parts, use a vise to hold the wand (2) when assembling threaded parts onto the wand.*

*Teflon<sup>™</sup> is a registered trademark of the Chemours<sup>™</sup> Company.*

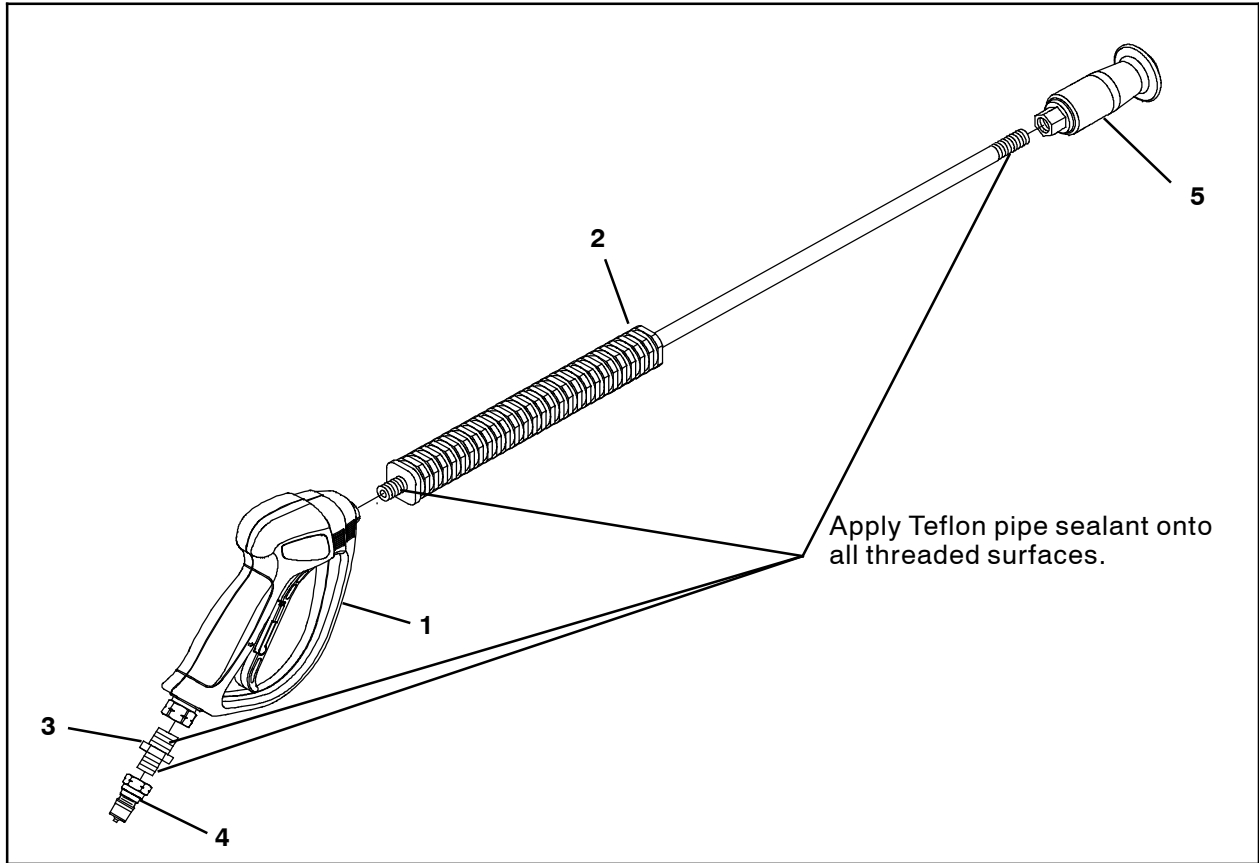


FIG. 1

Bill Of Materials For Wand Kit, Press Wash, Afmkt [T/M17] - 9018842

Ref.	Tennant Part No.	Description	Qty.
1	1039042	Handle, Gun, Trigger	1
2	1039044	Wand, Str, SS, 28	1
3	1044428	Fitting, Brs, Str, PM04/PM06 [HP]	1
4	1042191	Fitting, SS, QDC, Mal	1
5	1238513	Nozzle, Press Washer	1

TENNANT COMPANY  
P. O. Box 1452  
Minneapolis, MN 55440-1452